



FOR SALE - BUILDING & LAND

**ZONED RMS 1
13 BEDROOM RESIDENCE**

Surrey (Cloverdale), British Columbia

**\$1,600,000
Land & Bldg Only**



- 13 bedroom home in Surrey, BC currently operating as a Private Personal Care Facility
- Zoned RMS 1
- Main floor consists of 11 bedrooms, 12 bathrooms, dining room, living room and commercial kitchen
- Upper floor consists of 2 bedrooms, den, living room, dining room and kitchen
- Over 6260 square feet
- VIRTUAL TOUR - www.seevirtual360.com/18273

For more information please contact:

Judith Rimmer, Associate

T 780.405.9333

E jrimmer@remaxcomm.ca

The information contained herein was obtained from sources deemed to be reliable and is believed to be true; it has not been verified and as such, cannot be warranted nor form a part of any future contract.



Parking

Total Square Feet: 6,260 SF
Main Floor: 5,100 SF
Upper Floor: 1,160 SF
Zoning: RMS 1
Comments: - Licensed Private Intermediate Care Home Business can be purchased separately for \$300,000

Price: \$1,600,000
Land & Building Only

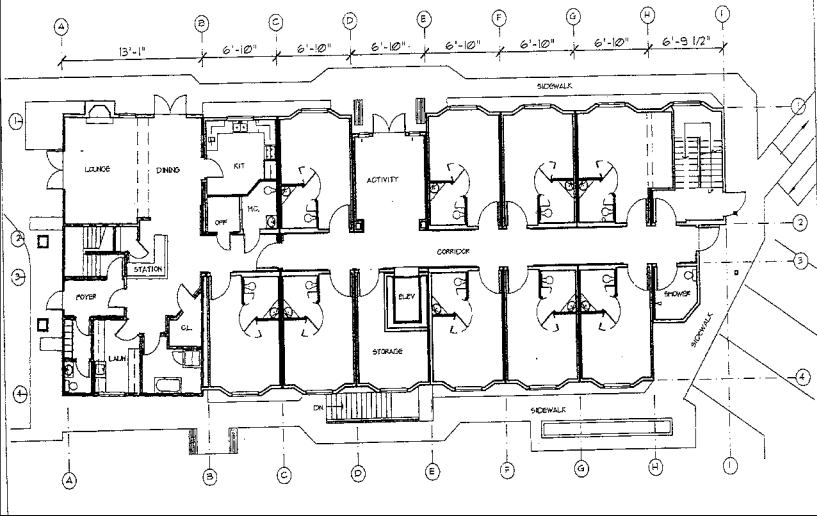


Kitchen



Bedroom

Floor Plan



Nursing Station



Dining Area

For more information please contact:

Judith Rimmer, Associate
T 780.405.9333
E jrimmer@remaxcomm.ca

The information contained herein was obtained from sources deemed to be reliable and is believed to be true; it has not been verified and as such, cannot be warranted nor form a part of any future contract.